

## EMBELLISHING A READY-MADE

# Blouse

by HOPE YODER  
from DESIGNS BY HOPE YODER, INC.  
and EMBELLISH™ QUALITY STABILIZERS,  
THREADS & SEWING NOTIONS

PHOTOGRAPHY BY MAC JAMIESON

### Love to sew but short on time?

Why not embellish a ready-made garment instead of making it from scratch? You'll still achieve that wonderful sense of self-satisfaction we all experience when sewing with passion. Of course, having the right tools and notions makes all the difference when turning a ready-made into a work of art. With machine embroidery, successful embellishment requires correct knowledge of stabilizers, along with stitch count and design density. It's a must to pair the right products with your designs and fabric; it's like pairing a fine wine with the main entrée. Visit [classicsewingmagazine.com](http://classicsewingmagazine.com) for complete instructions on using your software to lighten the design's density and lessen the stitch count, using an embroidery template and much more.

### SUPPLIES

Purchased linen blouse  
(sample from [JJill.com](http://JJill.com))

Spray starch

#### Adding Collar Lace:

$\frac{3}{8}$ " French lace insertion - 1 yard

\*measure your collar for a more exact measurement

Embellish™ Flawless thread

Glass head pins

Lace shaping board or pin/press surface

Embellish™ Dissolvable Tearaway

Floriani Chrome Needles - #75 embroidery

#### Adding Embroidery:

Steampunk'd Embroidery Collection  
(Designs By Hope Yoder, Inc.)

English cotton netting 9" square

Cotton organdy 9" square

Embellish™ Rinse-Away Clear Topper

Embellish™ Fusible Dissolvable Tearaway

Embellish™ Sticky Printable Template  
Floriani Total Control U embroidery software

3 shades of white Floriani Poly

Embroidery thread

720 Turtledove

730 Off White

800 Pure White

Floriani Chrome Needles - #80 microtex



Adding lace to the collar on this blouse completes the embellishment while adding softness and a touch of romance. This method would work equally well on a pointed collar without a stand. Just substitute the words "collar-stand" with "neckline edge."

### PRE-WASH?

To wash or not to wash, that is the number one question. When working with ready-made garments with fabrics that may shrink or dye colors that might bleed, it's always a good idea to pre-wash. Pre-washing will remove any chemicals used to treat the fabric; it will also pre-shrink the fabric and help to remove excess dyes that may bleed into your embellishments.

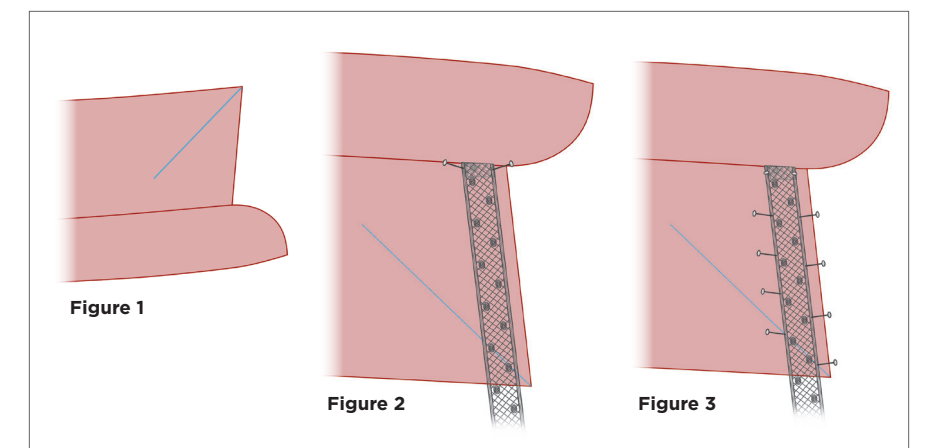
### STARCH AND PRESS?

If working with cotton or linen, spray the fabric with starch and press well to remove any wrinkles and to help stabilize. While the pre-washing and ironing is true for fabric, I would not suggest pre-washing lace. If the lace needs more body, spray the lace with starch and let it air-dry. Once the lace is dry, you can give it a quick press if needed. Washing lace will cause

distortion and makes it impossible to work with.

### DIRECTIONS

1. Place the collar right side up on a padded surface, such as a lace shaping board or soft ironing board cover.
2. Using a water-soluble fabric marker; draw a line bisecting the angle at each collar point (fig 1). This line is necessary for creating a lace miter.
3. Fold under  $\frac{1}{4}$ " and press one end of the lace. Pin the folded end of the lace even with the collar-stand and about  $\frac{1}{8}$ " from the collar edge. NOTE: Place the pins into the lace/collar/padded surface at an angle to allow the iron to press the lace when the shaping is complete (fig 2).
4. At the marked miter line, place a pin through each lace heading (straight border of the lace) on the line (fig 3).







## designer tip

To easily remove the dissolvable tear-away stabilizer, run a wet Q-tip around the edges of the stitches. It will tear easily without risking popped bobbin thread stitches or distortion.

— Hope

**5.** Fold the lace on itself, snug against the outer pin. Unpin the inside pin and re-pin both lace layers back to the miter line (fig 4).

**6.** Unfold the lace and start down the second side, creating a perfect miter at the collar point (fig 5).

**7.** Shape the lace along half of the collar, pinning as you go.

**8.** Spray the pinned lace with a light layer of starch. Using a press cloth, press (up and down motion) to dry the lace.

**9.** Re-pin the lace to the collar only and remove from the padded surface.

**10.** Place the second half of the collar on the padded surface and continue pinning the lace to the collar  $\frac{1}{8}$ " from the collar edge. Use the same mitering technique when you come to the other corner. Pin the lace up to the marked line as before (fig 6a). Fold the lace back and reposition the pins (fig 6b). Tuck the folded excess lace under the miter; towards the outer edge of the collar. Then bring the lace into position to secure it along the next edge (fig 6c).

To finish the lace, fold the end under  $\frac{1}{4}$ " with the folded edge even with the collar-stand (fig 6d). Starch, press, un-pin and then re-pin, removing the collar from the padded surface.

**11.** Place Embellish™ Dissolvable Tearaway under the collar:

**12.** Baste the lace to the collar within the heading on both edges (straight stitch L= 2.5-3.0) (fig 7).

**13.** Zigzag (L=1.5, W=1.5) along each side of the lace heading using a #80 microtex needle, an open-toe presser foot and lightweight thread in the needle and bobbin (fig 8).

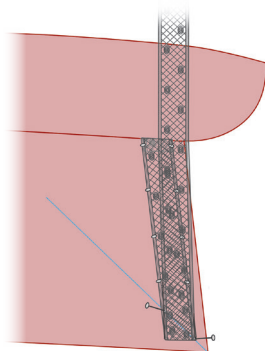


Figure 4

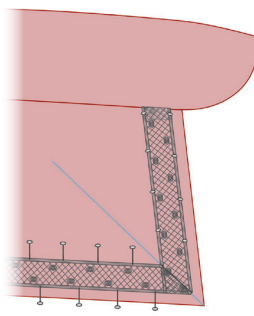


Figure 5

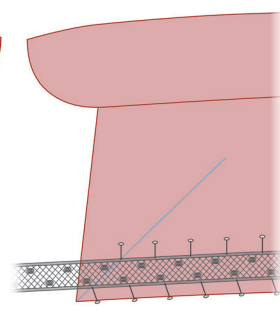


Figure 6a

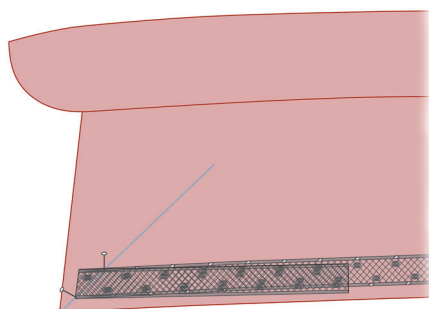


Figure 6b

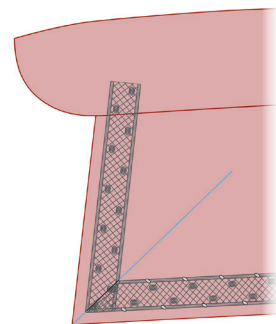


Figure 6c

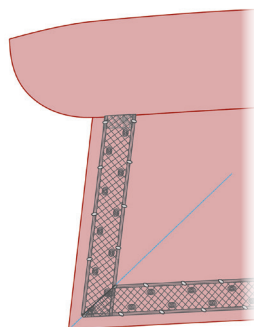


Figure 6d

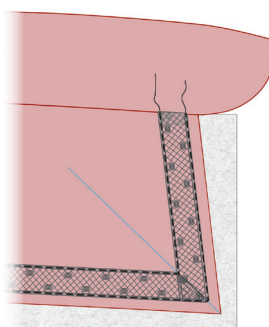


Figure 7

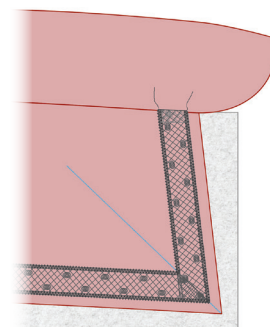


Figure 8

## REMOVING THE STABILIZER

When the embellishments are complete, wash your garment using a longer soak cycle to allow the stabilizer to dissolve. The stabilizer is made of half tear-away and half water-soluble fibers, making it the perfect pairing for lightweight fabrics like linen, since some of the tear-away remains underneath the stitching and the rest dissolves in the open spaces. This leaves the fabric stabilized in all the right places after multiple wash cycles while still having the same amount of soft drape prior to adding decorative stitching or machine embroidery.

*Hope Yoder is an international sewing, embroidery and embellishment expert and the owner of Designs By Hope Yoder, Inc., an embroidery and sewing pattern company. Hope is a Craftsy Instructor and designs machine embroidery designs, sewing patterns and is frequently hired by sewing machine companies to train storeowners. Known for her innovative, trendy and fresh designs, Hope often incorporates her machine embroidery artwork files into electronic die cutting crafts. She is the face of the new digital cutting software "Craft-N-Cut" and the inspiration behind her new brand called "Embellish™" distributed by R/NK Distributing. Check out "Designs By Hope Yoder Fan Group" on Facebook for inspiration and ideas.*